

# REA JET

INDUSTRIAL CODING AND  
MARKING SOLUTIONS –  
MADE IN GERMANY

## REA JET HR *pro* OEM

High-resolution coding and marking system  
for machine and systems engineering



# REA JET HR *pro* OEM: High Resolution Inkjet Printer with HP print technology



Throughout all industry segments there is a growing need for coding and marking. Nowadays, hardly any product leaves the factory without printed information.

REA JETs HR product family offers high-resolution coding and marking systems using especially developed inks to facilitate clean, environmentally-friendly and solvent-free marking on even non-porous surfaces.

## Ingenious hardware in a small space

Due to new legal regulations, the even higher requirements for product safety or the requests of marketing departments, the number of product markings and their complexity is increasing.

The direct integration into the production machines is often required. The REA JET HR *pro* OEM with its ultraslim, compact design is the answer to the above-mentioned requirements. It is the first choice especially for applications with high printing frequency and complete machine integration.

With the connection option of up to 4 print heads and the extremely powerful processor, you are perfectly equipped for the most demanding marking tasks at all times.

## Areas of application:

- Counterfeit protection and traceability
- Perfectly suited for serialization as well as track & trace tasks
- Best before dates
- 1D / 2D codes for automatic identification and control of logistic processes
- Print promotion codes and counter numbers
- Personalized prints
- Fast implementation of new marking regulations

HR series systems are maintenance-free. They represent an economical alternative to Continuous Ink Jet (CIJ) systems for numerous applications offering an even enhanced marking quality.



HR *pro* OEM Controller

## Advantages:

- Based on proven thermal inkjet print technology
- Extremely high resolution at high product speed
- Maintenance-free – you receive a new print unit with each cartridge change
- Highest level of operational reliability and availability thanks to:
  - Monitoring of cartridge locking
  - Permanent storage of cartridge levels
  - Automatic adjustment of operating parameters for the ink used
  - Intuitive graphical user guidance
- Easy cartridge change
- Modular concept – cost-effective adaptation of the marking system to the different application requirements
- Simple integration and implementation
- Stable stainless-steel housing – ideal for installation in switching cabinets and full machine integration
- Integration via top hat rail mounting
- High performance for high-speed serialization tasks
- Optional bulk system for uninterrupted printing at high throughput rates
- Code quality check in one process with verification systems from REA VERIFIER

## Sturdy print heads in aluminium design (milled from solid material)

This smart construction offers optimal protection for the cartridge in clean and even demanding daily industrial use. Each print head accommodates one TIJ cartridge. For barcodes, graphics and human readable texts this allows a font height of max. 12.7 mm per print head. Print heads and sliding plates are available for special requirements.

## Simple print head cascading capability

Thanks to the exact, firmly integrated installation accessories (dowel pins and notches) the print heads can be simply and precisely cascaded. This allows for a font height of up to 50.8 mm using four cascaded print heads.

## Compact dimensions

Despite the the very robust design of the print head, its dimensions are surprisingly small, which is especially important for cascading multiple print heads. The compact print head design facilitates integration into virtually all machines and systems.

## Locking lever for cartridge with integrated position monitoring

This wear-free monitoring by magnetic sensor allows removal and exchange of cartridges without the need to manually stopping the controller. This is triggered automatically by the monitored locking lever. This ensures safe handling of the cartridge without operator intervention.

## Intelligent Cartridge-chip

The cartridge chip continuously provides information on current ink level, fire parameter settings and use of the correct ink. If ink filling level in cartridge is running low, you are automatically informed and can react promptly. The cartridge chip contains individual print parameters and information on the type of ink used - these are data that guarantee perfect print results.



REA JET HR print heads

## Technical details at a glance

	REA JET HR <i>pro</i> OEM
Typical target group and application areas	Machine manufacturers, fully integrating the printer into the machine control.
Dimensions (L/W/H)	310 x 36 x 195 mm
Weight	2.8 kg
Housing protection class	IP20
Max. number of print heads	4
Max. print height	50.8 mm
Digital input (24V DC)	4 (extendable to 12)
Digital output (24V DC)	4 (extendable to 8)
Interface	Ethernet, USB
Processor power	Super high performance, best suited for high-speed serialisation.
Status display / device display	Display of relevant system parameters on status LEDs.
Operation	Necessary system tasks can be executed via DIP switches.
Webserver	Yes

## Controller for switching cabinet installation

Ideally suited for installation in control cabinets and integration into machines and systems only 36 mm mounting depth.

Power supply for the REA JET HR *pro* OEM is provided by the 24V DC inlet, which enables simple integration into the switching cabinet with very low heat generation and independent of mains supply on global site.

Separable plug connectors facilitate simple pre-wiring in switching cabinet and if required a rapid device exchange.

## Full True Type Font (TTF) and Unicode Character Set support

Full True Type Font support guarantees that all corresponding TTFs can be used directly with the REA JET HR *pro* OEM without conversion or further processing. This also applies to client-specific TTFs. As long as the corresponding font is available, the fully supported Unicode Character Set enables the use of variable print content in any desired language.

## Checking device status

At a glance, the REA JET HR *pro* OEM reliably informs the user via status LEDs about pending signals and the device status:

- Print head status with cartridge detection
- Shaft encoders,
- Rotation direction,
- Job start
- Digital I/Os etc.

## Safe operation via integrated web server or your machine control panel

Safe parameterisation and operation of the HR *pro* OEM can be performed via the integrated web server or directly via the machine control panel (HMI – Human Machine Interface). The web server can be operated through any standard web browser, no separate software is required.

Use of current web technologies facilitates rapid and intuitive operation.

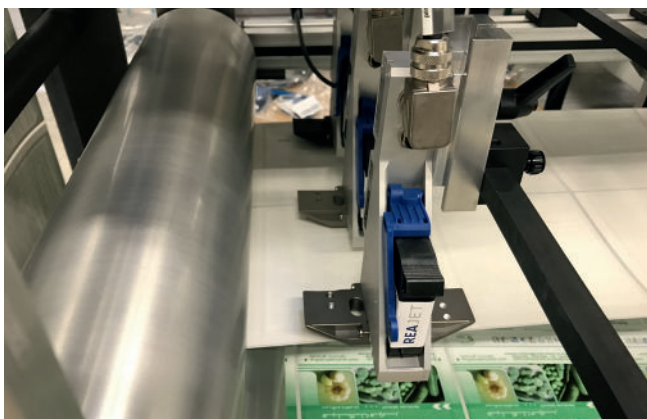
This ensures operational safety and reduces the training period to a minimum. The web server operates in over 20 languages, which makes worldwide use very easy. Operational safety is ensured by the HTTPS protocol, authentication via security token and the integrated user management.

The operation of the printing system via the machine control panel (HMI) is achieved by an interface which uses a modern communication protocol (asynchronous / event-driven).

User guidance is completely integrated and realised via the machine operation panel. The choice is up to you.

## Future proof investment

The use of high-performance future-proof components assures you to be best prepared for upcoming serialisation tasks.



Backside numbering of labels

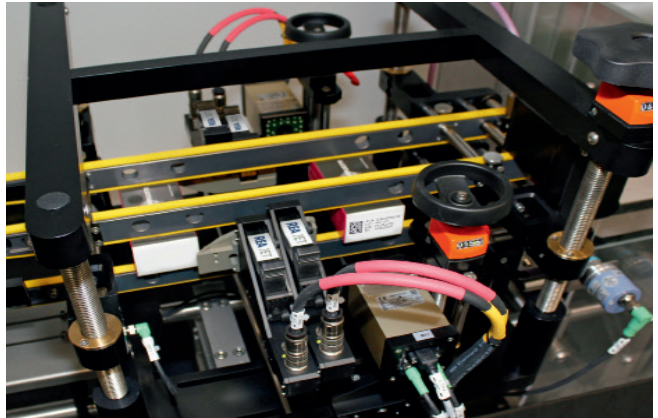


Marking of lugs





HR *pro* OEM integrated in packaging line



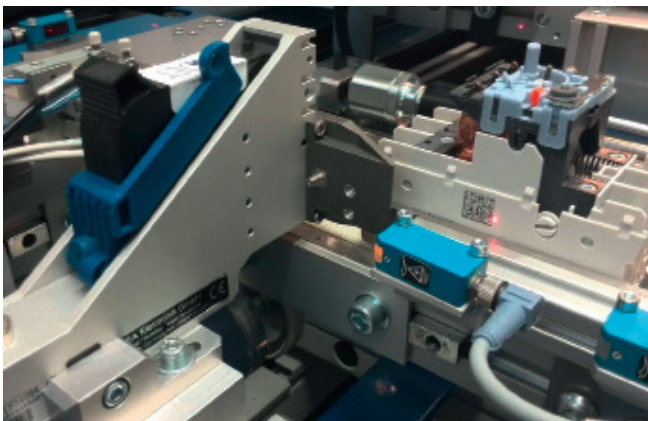
Marking of folding boxes with Data Matrix Code



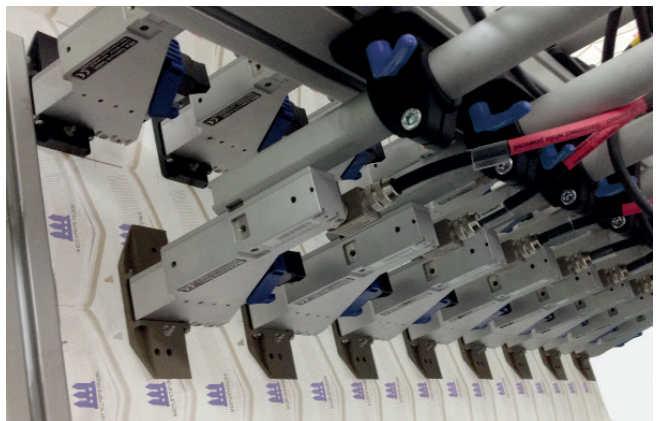
Marking of wood



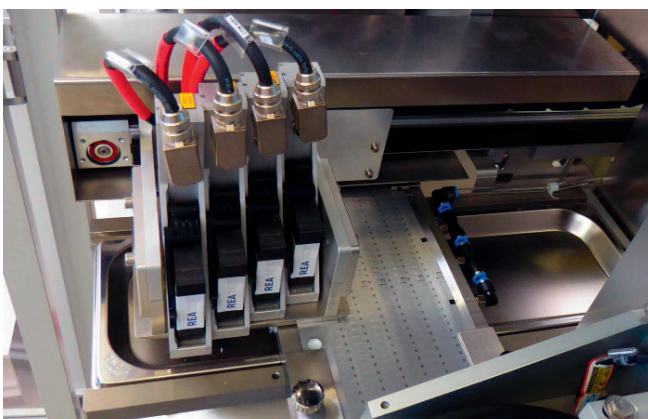
Label replacement with 3 REA JET HR print heads



Side marking of circuit breakers



Label finishing with 16 HR print heads



Coding of blister with 4 cascaded HR print heads



HR *pro* OEM integrated in inserter machine

# REA JET



## **REA Elektronik GmbH**

Teichwiesenstrasse 1

64367 Muehlthal

Germany

T: +49 (0)6154 638-0

F: +49 (0)6154 638-195

E: [info@rea-jet.de](mailto:info@rea-jet.de)

[www.rea-jet.com](http://www.rea-jet.com)