

REA JET

INDUSTRIAL CODING AND
MARKING SOLUTIONS -
MADE IN GERMANY

REA JET HR 2.0

High Resolution Inkjet Printer
based on HP cartridge technology



Making the tried and true better: The new HR generation High-resolution contact-free printing

With the high-resolution REA JET HR printing product family, REA has had the world's most powerful HP-based printing system on the market for years. The decisive features: It is completely service- and maintenance-free, and that at high resolution.

For smooth and absorbent materials and the printing of machine-readable codes, this technology is more and more the first choice when variable shelf life, batch information and codes need to be printed reliably at sometimes breakneck speeds.

The new HR generation is significantly more compact and therefore more flexible and even easier to integrate. The sturdy aluminium housing, intuitive operation and

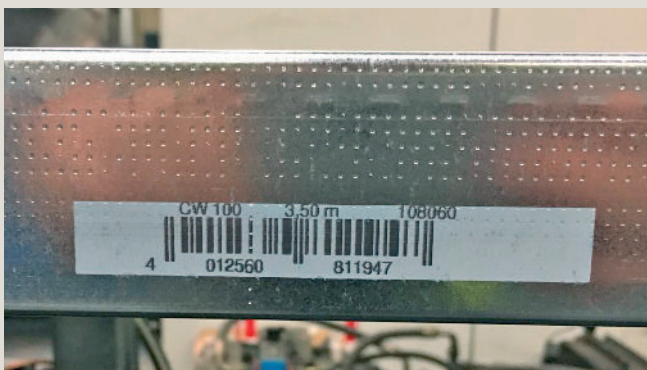
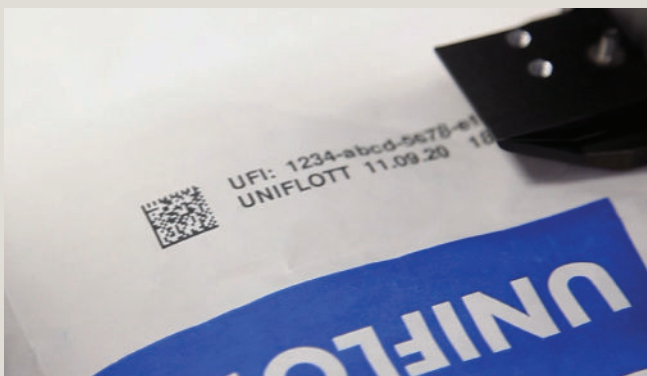
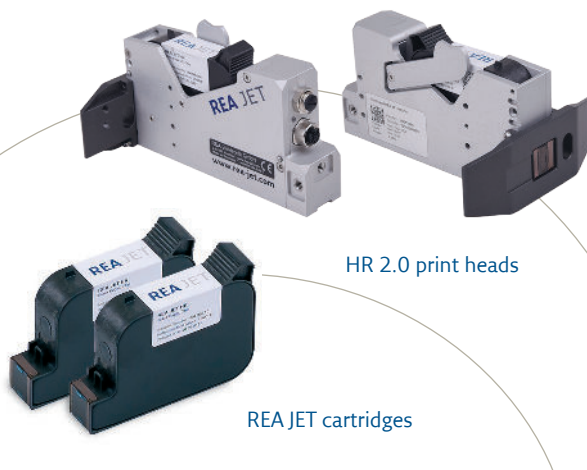
new print head design make the coding and marking system suitable for unrestricted industrial use.

The system has been particularly successful in the pharmaceutical, food, wood, paper and packaging industries for markings with a print height of up to 12.7 mm per print head. Multiple print heads can be cascaded for larger print heights.

With its integrated Ethernet interface and full Unicode support, the HR is the first choice for serialization tasks and track & trace projects. Up to 80 serialized prints per second and 762 m/min make it the fastest printing system in its class.

Fields of application:

- Counterfeit protection and traceability
- Ideally suited for serialization as well as track & trace applications
- For smooth, absorbent and non-absorbent surfaces
- Alphanumeric texts, barcodes, 2D codes (such as Data Matrix codes) and logos
- Variable data such as date, time, counter, shift code, database contents



Functions and advantages at a glance

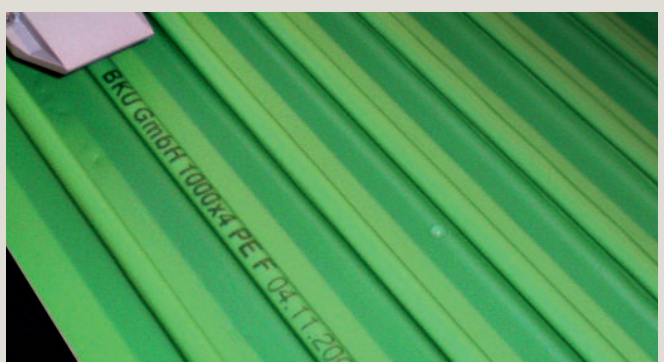
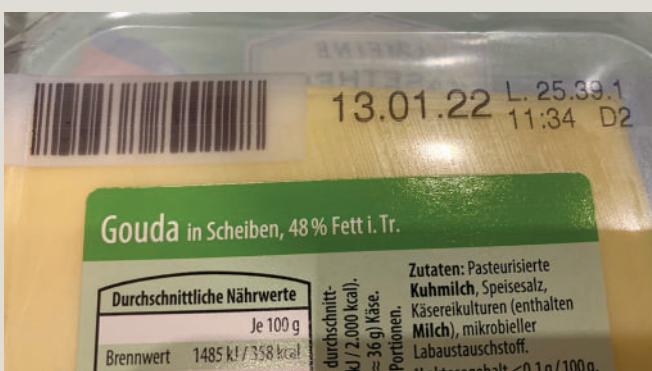
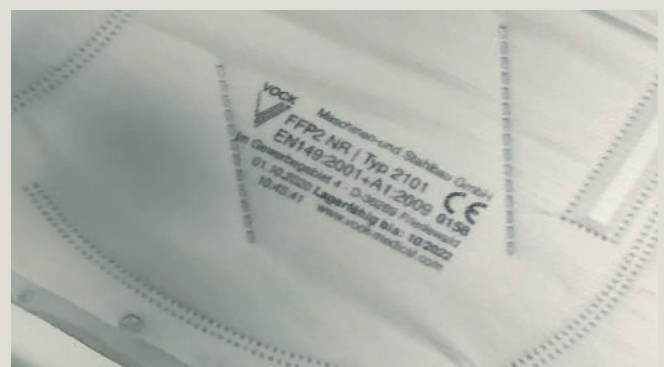
- Based on thermal inkjet printing technology, proven in a million uses
- Structurally compact, flexible and easy-to-integrate print head
- Extremely high resolution at high product speed
- Maximum print triggering of up to 1500 dpi adjustable in 26 levels
- Print heights up to 50.8 mm
- Easy handling via touch or rotary/push operation on the controller
- Simple, intuitive operation thanks to the cross-technology REA JET TITAN platform
- Quick cartridge change
- Maintenance- and service-free – you get a new print unit each time the cartridge is changed
- Maximum operating reliability and availability:
 - Monitoring of cartridge lock
 - Permanent storage of cartridge levels
 - Automatic setting of operating parameters for the ink used
- Print data recording with a USB scanner
- Data and power are supplied via Ethernet hybrid cable
- Optional bulk supply for interruption-free printing for large throughput volumes
- Optional accessories, such as industrial-grade distance compensation devices for different product positions during the printing process
- High-quality verification of the code quality in a process with REA VERIFIER verification systems



4 cascading print heads

Software
NiceLabel

Compatibility: Adoption of
Loftware NiceLabel print layouts



Error-free and fast operation with the Universal controller

Ready for immediate use worldwide and across technologies

- Flexible expansion: 2 or 4 print heads can be connected
- Sturdy, for harsh everyday industrial use constructed quality stainless steel housing
- Protection class IP65: Protected against dust and splash water for the toughest industrial conditions
- 24 V power supply: For direct integration into machines and systems
- Wide range power supply available: For immediate worldwide use
- Full Unicode support: All world languages can be printed for companies with international customers
- Support for all True Type Fonts (TTF): The greatest possible design freedom for your print texts
- Integrated WYSIWYG graphical user interface: Realistic display of the print contents
- XML-based data structure and communication protocol: Globally used standard for data compatibility
- Uniform communication protocol for status monitoring across multiple devices, providing the option for customer-specific signal processing
- Integrated web server: Makes it possible to use a PC, tablet or smartphone for operation of the printing system



REA JET Universal Controller



REA JET Universal Controller Touch

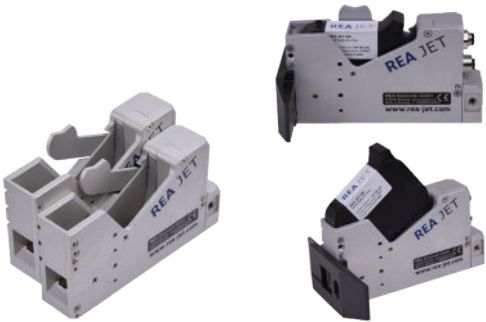
REA JET TITAN Touch Controller

The REA JET TITAN Touch Controller is used as an alternative to the rotary push controller. The device is operated entirely with the easy-to-read 10.1-inch display without buttons or knobs and exclusively by touching the screen.

Operators can even keep their gloves on when controlling their coding and marking systems with the modern, tile-based user interface.

Technical data

System	REA JET HR 2.0
Printing technology	Thermal inkjet
Marking height per print head	12.7 mm
Vertical resolution	300 and 600 dpi
Horizontal resolution	60 bis 1500 dpi in 26 steps
Print speed	up to 762 m/min
Max. print length	13800 mm layout length (depending on the resolution)



Compact HR 2.0 print heads

Controller	REA JET Universal Controller 2K	REA JET Universal Controller Touch 4K
Operation	Rotary pushbutton (for harsh ambient conditions)	Touch (individually expandable and restrictable user interface)
Display	5.7" display	10.1" touch display
Max. number of print heads that can be connected	2	4
Max. marking height	25.4 mm with 2 print heads	50.8 mm with 4 print heads
Interfaces	Ethernet 1 Gbit 3x USB	Ethernet 1 Gbit 3x USB
Digital inputs 24 V DC	6 digital inputs	6 digital inputs
Digital outputs 24 V DC	4 digital outputs	4 digital outputs
Protection class	IP65	IP65
Power supply	24V DC from SELV power supply External power supply IP67 (100-277 V AC, 50/60 Hz)	24V DC from SELV power supply External power supply IP67 (100-277 V AC, 50/60 Hz)
Weight	3900 g	6000 g
Web server	Yes	Yes
TITAN platform	Yes	Yes

REA JET TITAN Platform

The REA JET TITAN Platform is a true cross-device and cross-technology operating concept for all REA JET marking technologies with ink, color or laser.

Employees only need to be trained once and can use the REA JET TITAN platform to operate all of the REA JET

coding and marking systems used in the company.

This significantly shortens the training period, minimizes sources of error and offers flexibility when deploying staff.

Operation without limitations - now, everything is easier



Operation with gloves

Central push-turn jog-dial knob for operation with gloves directly on the production line



PC operation

Remote control using a PC workstation or production control station via network



Touch operation

Touch-sensitive screen for operation directly on the production line



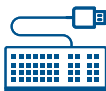
Remote maintenance

Option for remote maintenance and operation via VNC server



WLAN browser operation

Browser operation using mobile devices (PC, tablet or smartphone) via WLAN/WebGUI



Keyboard input

For recurrent, large text entries on the production line, international USB keyboards can be used

REA JET



REA Elektronik GmbH

Teichwiesenstrasse 1

64367 Muehlthal

Germany

Phone: +49 (0)6154 638-0

F: +49 (0) 6154 638-195

Email: info@rea-jet.de

www.rea-jet.com