



features and benefits

Complete solution for capturing dimensions, weight, barcodes, photos, product data and more.

Easy to use, portable and flexible data capture and management solution at an attractive price point.

The solution can be provided 'as a service' to avoid up-front capital investment and smooth business case development.

LTL Freight Transport

cubeIQ is the game-changing solution for capturing and sharing LTL shipment data.

Accurate dimensional data is critical to shippers and for carriers to protect their freight revenue.

Designed by LTL industry professionals, it's time to do freight transport better.

Robust support for
any freight charge
differences

Rapid ROI

Web portal for
visibility of freight
scanning activity
and data

Legal for trade data capture and storage.

Simplify the measurement of **oversized**, non-conveyable or **ugly freight**.

Easy integration with your existing systems, data sent near real time.

Efficient workflow for productivity, reduce forklift traffic congestion on your dock.

Capture **photographs and voice notes** to support your freight data.

Rapid ROI from freight revenue protection.

Support to ease **freight charge dispute** resolution.

Mitigate, reduce and eliminate **damages and shortages**.

Warehousing and Retail

Accurate master data is integral to the WMS running your warehouse.

Modern warehousing relies on master data for slotting, pick bin and storage capacity calculation and transport planning.

Deliver consistent, quality data across the organisation, from supplier to point of sale.

Measure any size
SKU in your
product range

Avoid data entry
errors

Web portal for
master data
management

Easy integration with your ERP or WMS, data sent near real time.

Automated **weight capture** from integrated scale.

Capture **complete inventory information**, including multiple barcodes and count of inner units per vendor carton.

Photographs and notes to compliment your master data and record any packaging or product issues.

Data validation processes to support accurate inventory data.

Web portal providing easy access to your master data.

Dashboards for visibility of your master data capture and inbound dock activity.



solution overview

Data Capture



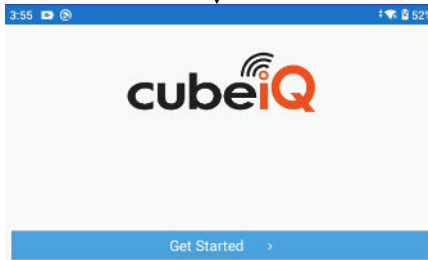
Barcode scanner
length x width x height
Legal for trade



Alibi memory
Photographs
Notes with voice
Automated functions for
efficient workflow
Configurable to match
operational requirements



Automated weight
transmission
Triggered by Cubetape
barcode scan
Legal for trade



Data Consolidation

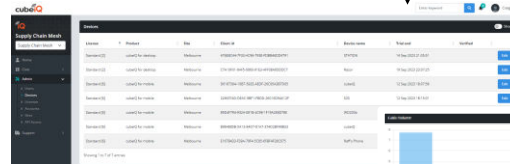
Web portal and cloud server
Legal for trade alibi memory

Intelligent and secure data management and storage
Hardware device utilisation and maintenance reporting
Device, user access and account administration
Data storage within customers region

Data transmitted
near real time
HTTPS

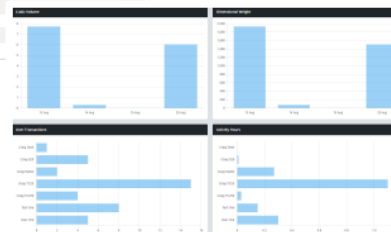


Web portal



Administration
Data management

Dashboards
Whole of network view
Labour management



Integration

Easy integration with end user systems
WMS, TMS, ERP, freight scan system
Options to remove IT dependency for trial / proof of concept
Secure data transmission
Data validation options

Data transmitted
near real time
HTTPS



End user
systems

Multiple options for data access and integration:
Standard API's
Custom API options
Data export via cubeiQ UI
Automated data exports to email

LTL freight transport customer examples



Master data customer examples



DAIMLER TRUCK



Scale integration partners



Mobility partners



Data summary

Supply Chain Mesh
Supply Chain Mesh

Home

Core

Item Data

Site Dashboard

National Dashboard

Logs

Admin

Support

Item Data

Melbourne

30 Jul 2023

to

14 Aug 2023

Refresh

Device name	Cubetape Id	User name	Date	Barcode 1	Pieces	Images	Valid	Export
TC25	2310868	Craig TC25	14 Aug 2023 10:31:48	SCRYFOP1117210007	1	0	Yes	View
TC25	2310868	Craig TC25	14 Aug 2023 10:31:36	SCRYFOP1117200003	1	2	Yes	View
TC25	2310868	Craig TC25	14 Aug 2023 10:30:29	SCRYFOP1117210006	1	0	Yes	View
TC25	2310868	Craig TC25	14 Aug 2023 10:30:22	SCRYFOP1117210009	1	0	Yes	View
TC25	2310868	Craig TC25	14 Aug 2023 10:30:14	SCRYFOP1117200004	1	0	Yes	View
TC25	2310868	Craig TC25	14 Aug 2023 10:30:07	SCRYFOP1117210004	1	0	Yes	View
TC25	2310868	Craig TC25	14 Aug 2023 10:29:57	SCRYFOP1117200001	1	0	Yes	View
TC25	2310868	Craig TC25	14 Aug 2023 10:29:51	SCRYFOP1117210014	1	0	Yes	View
TC25	2310868	Craig TC25	14 Aug 2023 10:06:00	SCRYFOP1117210002	1	0	Yes	View
TC25	2310868	Craig TC25	14 Aug 2023 10:05:41	SCRYFOP1117210003	1	0	Yes	View

Data record detail

View Item Data

Transaction date
20 Aug 2023 13:30:31

Client id
89D4F794-932A-E81B-4C98-1F19A2E8D78E

User name
User One

Device name
WD200

Cubetape id
2310868

Scale id

Barcode 1
33088100568620012648

Barcode 2

Barcode 3

Handling Unit	Pieces	Weight	Length	Width	Height	Volume	Density	Est. Class	Notes
1	1	22.45	64	50	22	0.0704	318.892	60	Incorrect label

Valid

Report

Close

Supply Chain Mesh

PDF

Transaction date
20 Aug 2023 13:30:31

Site name
Melbourne

User name
User One

Device name
WD200

Cubetape id
2310868

Scale id

Barcode 1
33088100568620012648

Barcode 2

Barcode 3

Handling Unit	Pieces	Weight	Length	Width	Height	Volume	Density	Est. Class	Notes
1	1	22.45	64	50	22	0.0704	318.892	60	Incorrect label

scquanta.com

Previous

1

2

3

4

5

6

Next

PDF transaction report
for email

Administration screens:

- Sites
- Users and access security
- Hardware devices
- Account management
- API's and integration
- Software licenses

Supply Chain Mesh

Supply Chain Mesh

- Home
- Core
- Admin
 - Users
 - Devices
 - Licenses
 - Accounts
 - Sites
 - API Access
- Support

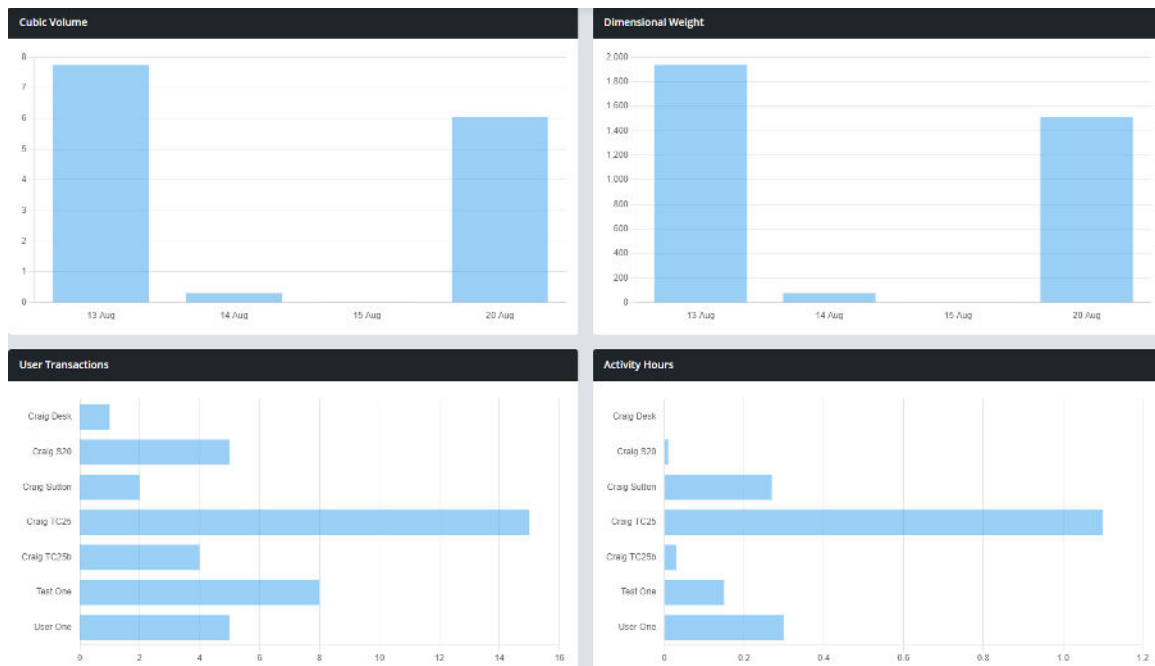
Devices

License	Product	Site	Client id	Device name	Trial end	Verified
Standard [2]	cubeIQ for desktop	Melbourne	476EBC44-7F33-AC96-793E-FDBB46DD4791	STATION	14 Sep 2023 21:05:51	Edit
Standard [2]	cubeIQ for desktop	Melbourne	C7A10F01-9AF5-0866-91E3-AFF08A6DDDC7	Razor	19 Sep 2023 23:07:25	Edit
Standard [6]	cubeIQ for mobile	Melbourne	D6187364-10B7-592E-AEDF-26C95A3B7D05	cubeIQ	12 Sep 2023 18:07:58	Edit
Standard [6]	cubeIQ for mobile	Melbourne	2269374D-DEAC-9BF1-FBDD-26016D94A12F	S20	12 Sep 2023 18:15:01	Edit
Standard [6]	cubeIQ for mobile	Sydney	89D4F794-932A-E81B-4C98-1F19A2E8D78E	WD200b	12 Sep 2023 18:25:41	Edit
Standard [6]	cubeIQ for mobile	Melbourne	B984885B-5A13-84D7-81A7-374D2BF99B33	cubeIQ	12 Sep 2023 19:39:56	Edit
Standard [6]	cubeIQ for mobile	Adelaide	E167B433-F39A-79F4-5C85-6FBF4F28C675	Raff's Phone	13 Sep 2023 04:54:51	Edit

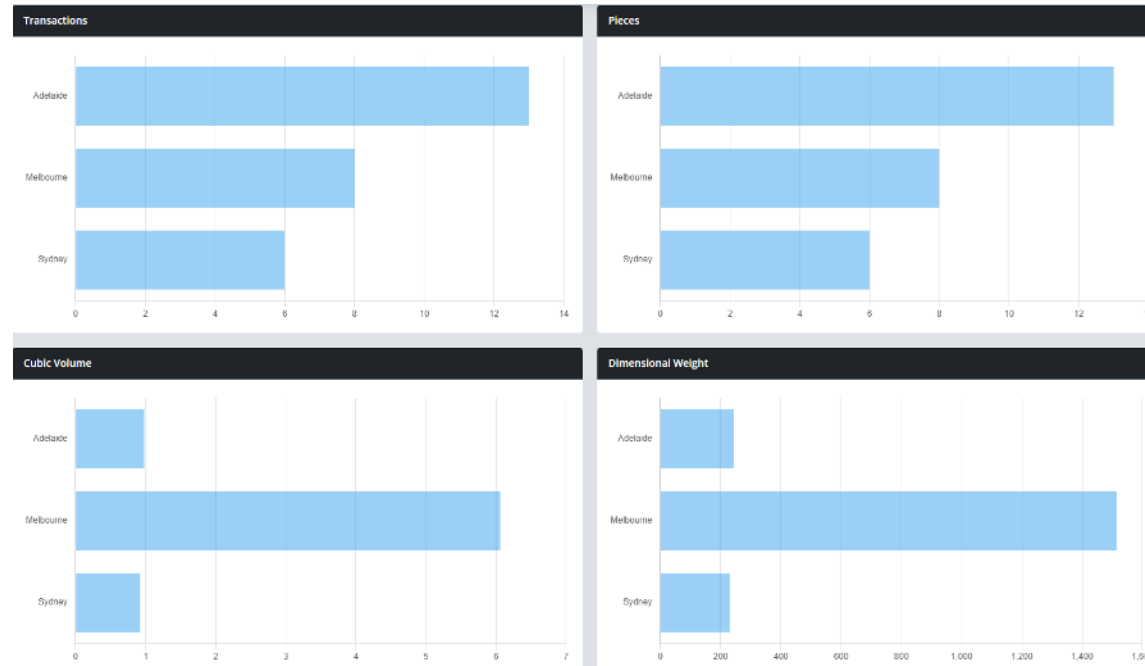
Showing 1 to 7 of 7 entries

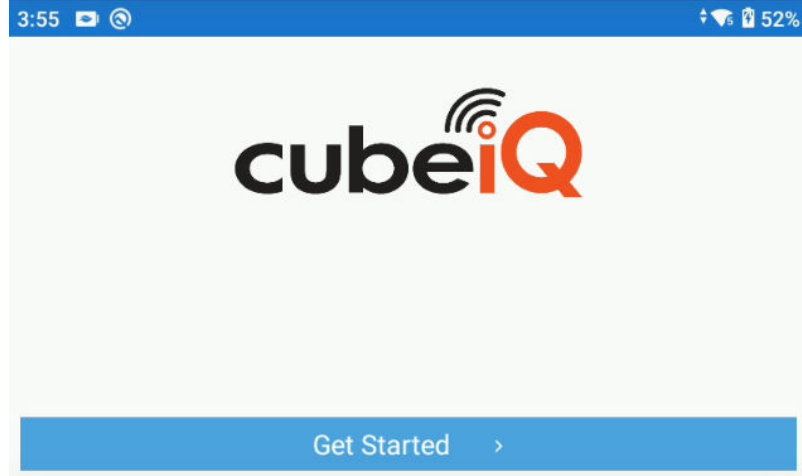
Previous 1 Next

Site Dashboard

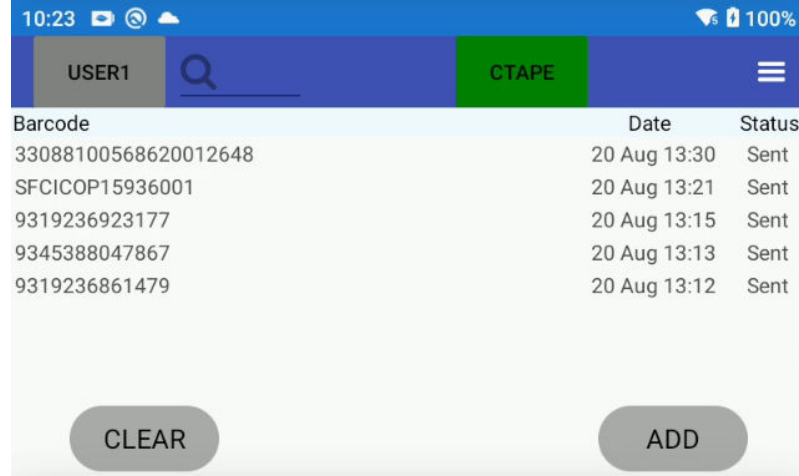


Network Dashboard

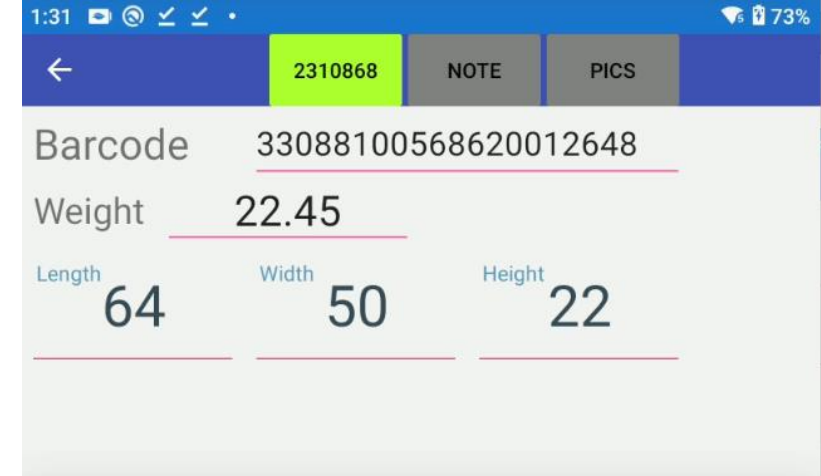




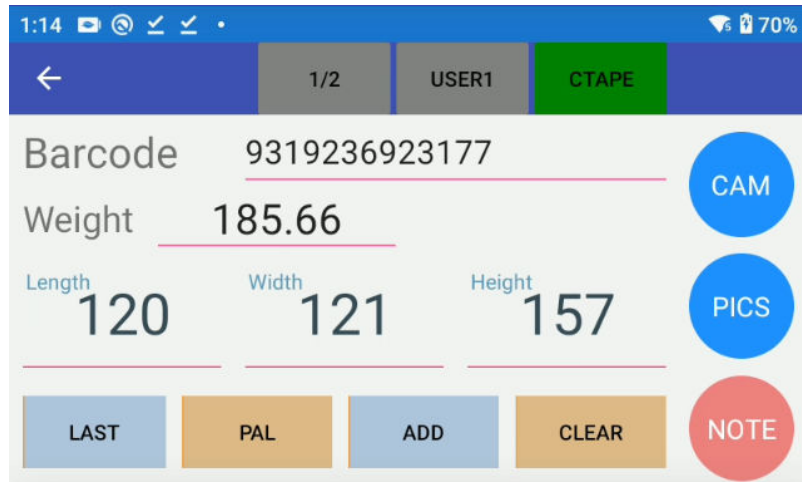
App splash screen



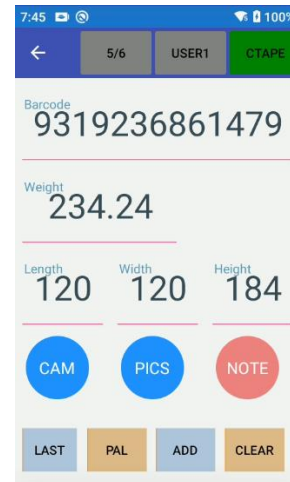
Data review screen



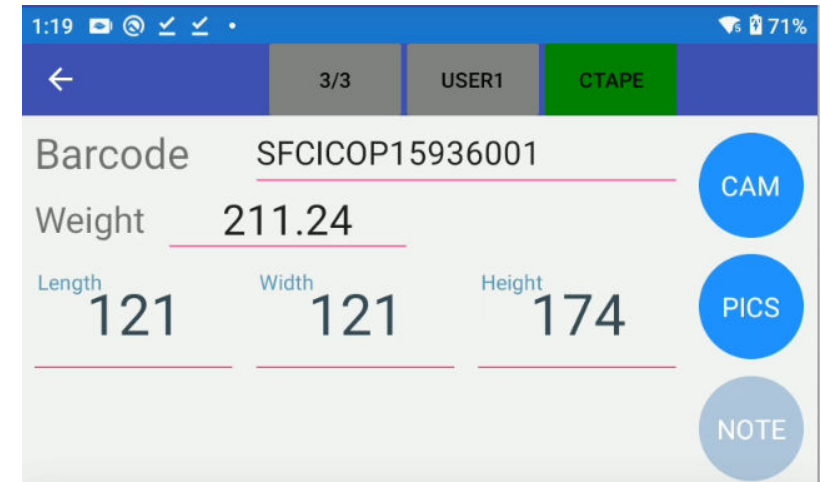
Review data record



Data capture screen with all function buttons activated
Function buttons are easily customised



Portrait orientation



Data capture screen with side function buttons only

Data summary
and review

cube*i*Q

Item Data

Send Data Restart Devices Add

CraigD Enter keywords here... Search

Date	Barcode	Length	Width	Height	Weight	Volume	Status	Valid	Export
20 Aug 2023 22:15:53	34643164643164	36.3	25.5	19.5	17.35	0.0181	Sent	<input checked="" type="checkbox"/>	View
10 Aug 2023 16:30:21	13464464	25	27	29	23.25	0.0196	Sent	<input checked="" type="checkbox"/>	View
08 Aug 2023 23:17:49	9319236861479	36	49	62	25.35	0.1094	Sent	<input checked="" type="checkbox"/>	View
23:17:41	9319236861479	31	46	66	25.35	0.0941	Sent	<input checked="" type="checkbox"/>	View
23:17:37	9319236861479	34	44	57	25.35	0.0853	Sent	<input checked="" type="checkbox"/>	View
23:17:31	9319236861479	25	31	40	25.35	0.0310	Sent	<input checked="" type="checkbox"/>	View
9:07:21	L013227	27	39	54	25.35	0.0569	Sent	<input checked="" type="checkbox"/>	View
9:00:38	4760030100046901	28	44	56	25.35	0.0690	Sent	<input checked="" type="checkbox"/>	View
9:00:03	4760030100046901	22	31	45	25.35	0.0307	Sent	<input checked="" type="checkbox"/>	View
8:45:45	9345388047867	39	59	75	25.35	0.1726	Sent	<input checked="" type="checkbox"/>	View

0 of 27 entries

Previous 1 2 3 Next

Scanned Item

Barcode 34643164643164

Weight 17.35

Pieces 1

Length 36.3

Width 25.5

Height 19.5

Modified

Get Weight

Save

Close

Data capture is highly configurable:

- include the capture of pack size information
- multiple barcodes when required
- manual data entry is supported.

Bench Scales



Courier 7000



Defender 5000 – pedestal indicator

Pallet Scales

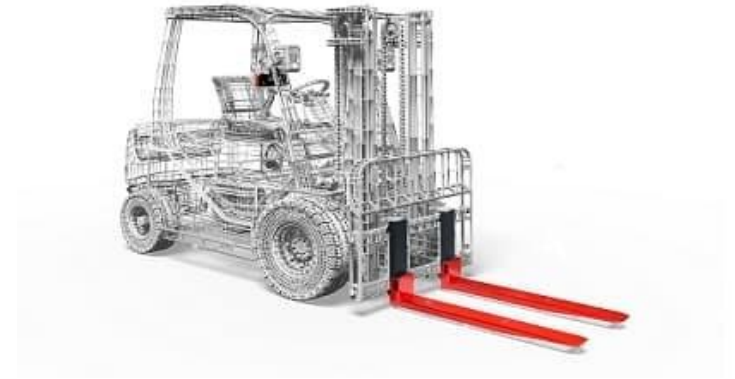


VE Series



VE Series Pallet

Forklift Scales



cubeIQ has 4 options to get your data from the cubeIQ infrastructure to your IT network.

Ref	Type	Scenario	Description
1	Data export	Trial or Proof of Concept No IT dependency	Data manually exported via the cubeIQ web portal. Data is exported in Excel format.
2	Automated email	Trial or Proof of Concept No IT dependency	Data automatically exported and emailed to activated email addresses. Data is exported in Excel format.
3	Standard API's	Typical end state approach Requires IT involvement	Data supplied in Json format, which can be mapped to the required format for end user system. Separate API's for data and photographs. Transmitted data is flagged to prevent duplicates.
4	Custom integration	Customer specific requirement	Custom integration options for customers with unique requirements.

Overview of cubeIQ API's:

